



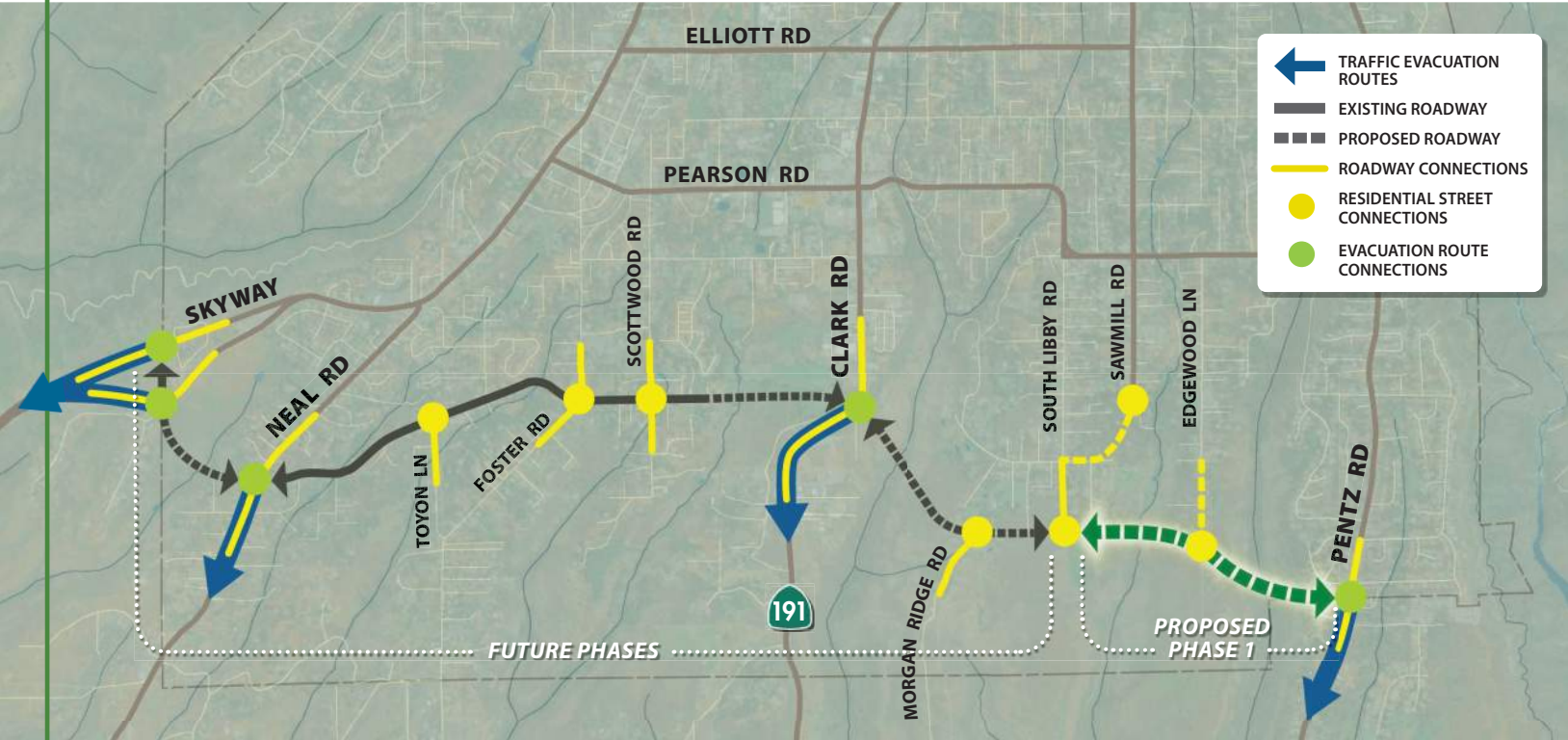
APPENDIX M
Roe Road Grant Application Fact Sheet





ROE ROAD EXTENSION PROJECT - PHASE 1

Implementing Agency: Town of Paradise



PROJECT BENEFITS

- Provides new access to Pentz Road traffic evacuation route
- Avoids 3-6 miles out of way travel during traffic evacuation
- Provides second route option for 4 residential dead-end streets
- Transportation grid network supports First Responders daily operations and emergency evacuation events

PROJECT INFORMATION

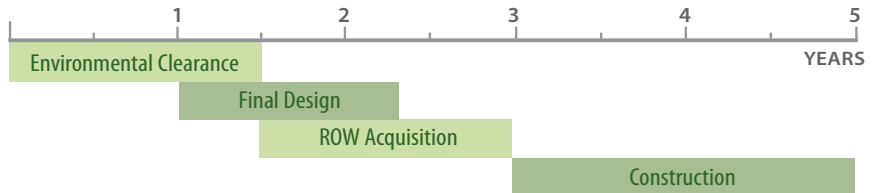
- Phase 1 introduces the concept of an eventual cross-town connection between Skyway and Pentz Road. The future 5-mile roadway will address circulation system deficiencies, build transportation options, add on-street bicycle lanes, and improve disaster evacuation route access.
- Phase 1 will close gap to 4 north-south roadways which serve disconnected residential areas.
- Directly benefits evacuation corridors which experienced a high concentration of traffic-related fatalities during the Camp Fire.
- Phase 1 prioritizes new roadway link serving long dead-end streets including South Libby, Edgewood, and Sawmill.

PHASE 1 COST

Environmental	\$2,700,000
Design	\$5,400,000
Right of Way	\$6,400,000
Construction	\$45,900,000

TOTAL \$60,400,000

PHASE 1 SCHEDULE



PROJECT OUTCOMES

- Improves Safety
- Increases Mobility Options
- Provides Disaster Resilience
- Gap Closure
- Supports Economic Recovery
- Benefits Disadvantaged Communities