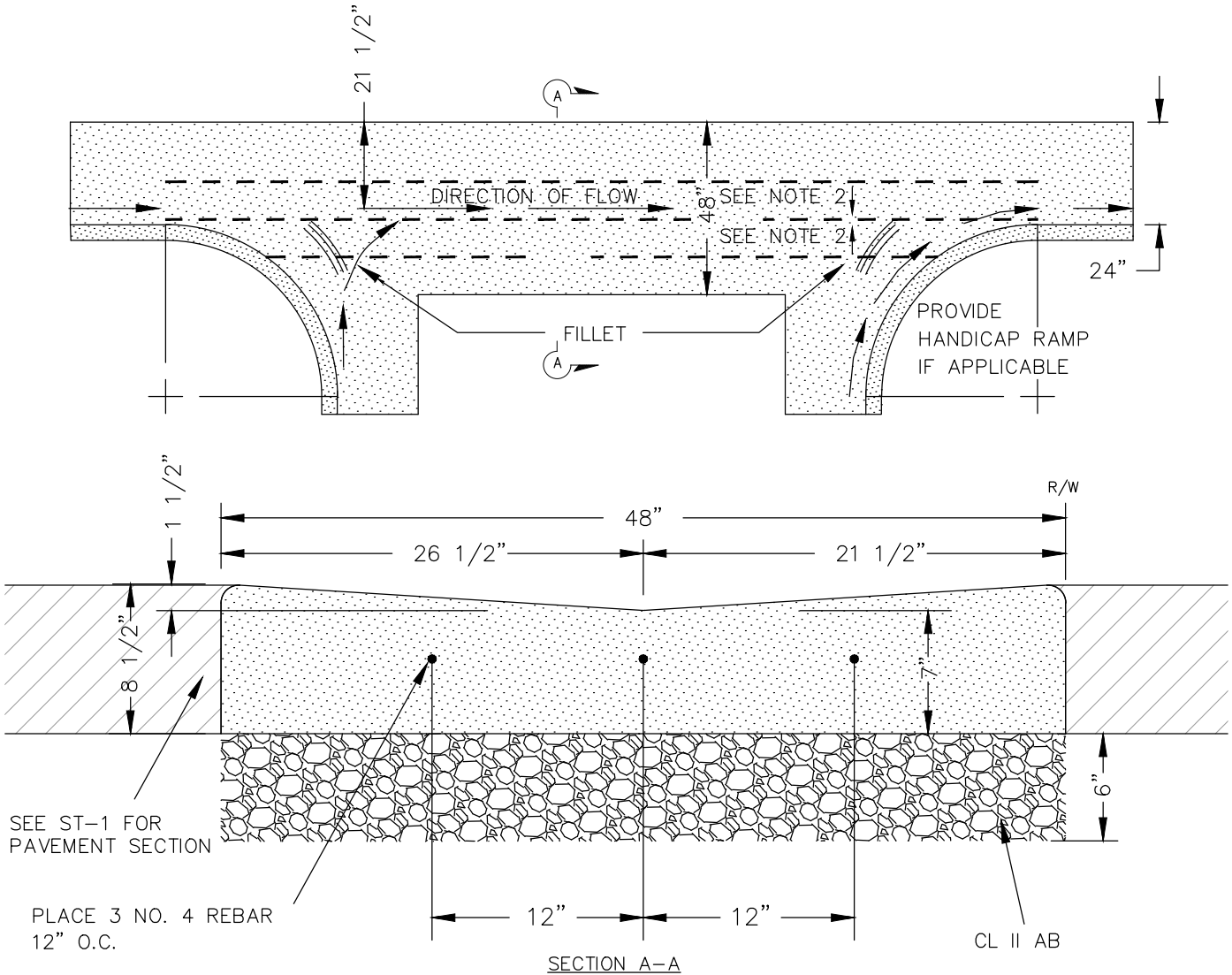


NOTES:

1. CONCRETE FOR CURBS, SIDEWALKS AND THEIR APPURTENANCES MUST BE MINOR CONCRETE CONTAINING AT LEAST 463 POUNDS OF CEMENTITIOUS MATERIAL PER CUBIC YARD OR MEET CALTRANS REQUIREMENTS IN THE STANDARD SPECIFICATIONS 73 & 90.
2. MAXIMUM GUTTER PAN CROSS SLOPE SHALL BE 2% ALONG ANY REQUIRED PATH OF FLOW



**TOWN OF PARADISE**  
**PUBLIC WORKS / ENGINEERING**

5555 Skyway  
 Paradise, California 95969  
 Phone: (530) 872-6291 Fax: (530) 877-5059

**Standard Detail D-3**  
**VALLEY GUTTER**

*[Signature]*  
 Approved

3/30/2023  
 Date