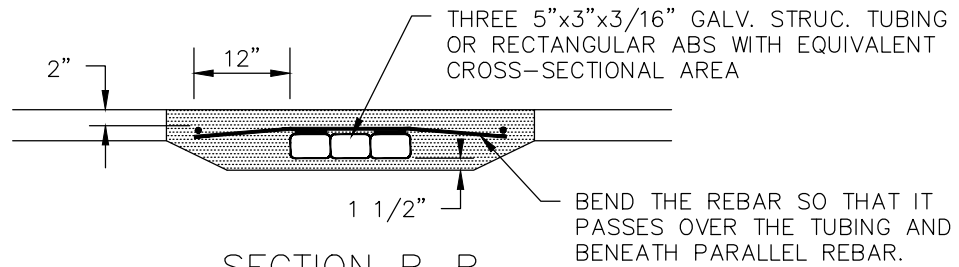
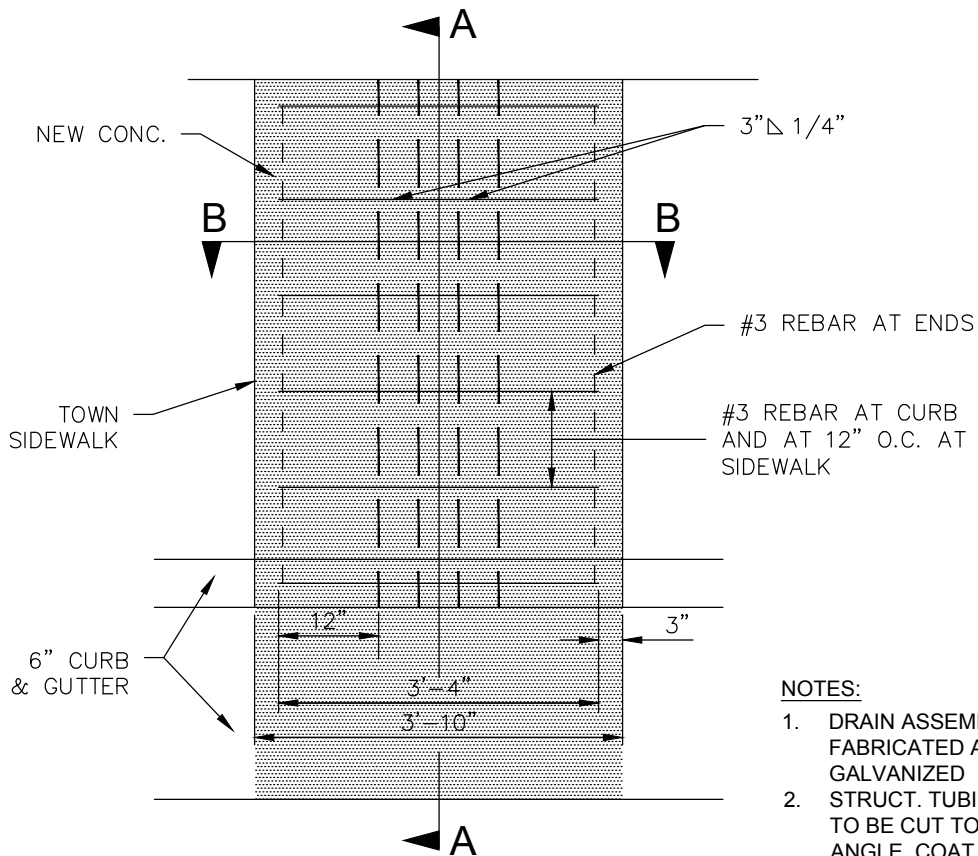


SECTION A-A



SECTION B-B



PLAN VIEW

NOTES:

1. DRAIN ASSEMBLY SHALL BE FABRICATED AND HOT DIP GALVANIZED
2. STRUCT. TUBING OR ABS TO BE CUT TO FIT CURB ANGLE. COAT ENDS OF TUBING WITH MIN. 2 COATS SHERWIN WILLIAMS "GALVANITE" OR EQUAL



TOWN OF PARADISE
PUBLIC WORKS / ENGINEERING

5555 Skyway
Paradise, California 95969
Phone: (530) 872-6291 Fax: (530) 877-5059

Standard Detail DR9
UNDER SIDEWALK DRAIN

Approved

3/30/2023
Date