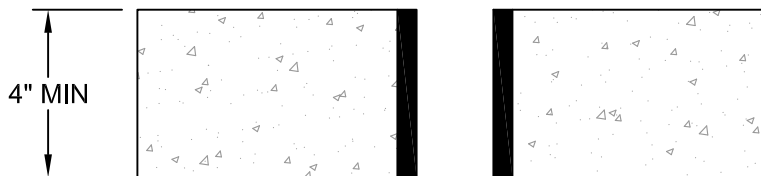


PLAN VIEW

NTS

TYPICAL FLAG POLE SLEEVE
LOCATION
SEE DETAIL BELOW

EXISTING/PROPOSED
6" CURB AND GUTTER



SECTION

NTS

2" PVC SLEEVE

NOTES:

1. CONTRACTOR SHALL INSTALL FLAG POLE SLEEVES AND CAPS ALONG SIDEWALKS FRONTING SKYWAY
2. CONTRACTOR SHALL FURNISH 2" THREADED CAP WHICH DOES NOT PROTRUDE GREATER THAN 1/8" FROM SIDEWALK GRADE.



TOWN OF PARADISE
PUBLIC WORKS DEPARTMENT

5555 Skyway
Paradise, California 95969

Phone: (530) 872-6291 Fax: (530) 877-5059

Standard Detail
Flag Pole Sleeve and Cap