



PROJECT DESCRIPTIONS

Katie Simmons

Disaster Recovery Director

ksimmons@townofparadise.com

530.872.6291 x153

Marc Mattox

Public Works Director/Town Engineer

mmattox@townofparadise.com

530.872.6291 x125

www.townofparadise.com

www.makeitparadise.org

Infrastructure Recovery Projects

Attached, find multiple one-page documents for each of the projects currently in motion for the recovery of the Town of Paradise. Below highlights the content each page gives details on.

- Project Description
 - Key Result
 - Timeframe
- Funding
 - Total Cost
 - Funding Resource
 - Unmet Need
- Frequently Asked Questions

Information updated 01/08/2021



ON-SYSTEM CULVERT REPLACEMENT

Vision: Safer
Project Number: 7301

CONTACT

Marc Mattox

Public Works Director/Town Engineer
mmmattox@townofparadise.com
530.872.6291 x105

Jessica Erdahl

Capital Projects Manager
jerdahl@townofparadise.com
530.872.6291 x103

WEBSITE:

www.townofparadise.com
www.makeitparadise.org

Project Description:

Replace damaged On-System HDPE culverts with RCP pipe culverts, including restoration of the roadway section above the pipe at various locations.

Key Result: Repair damaged culverts along evacuation routes to improve safety and provide safe and effective management of storm runoff.

Timeframe: Pre-Construction: 20/21
Construction: 21/22

Funding:

Pre-Construction Cost: \$73,900

Construction Cost: \$849,000

Total Cost: \$922,950

Funding Resource: FHWA – Emergency Relief

Unmet Need Pre-Construction: \$8,476

Unmet Need Construction: \$97,386

Frequently Asked Questions:

What does this mean for residents and businesses?

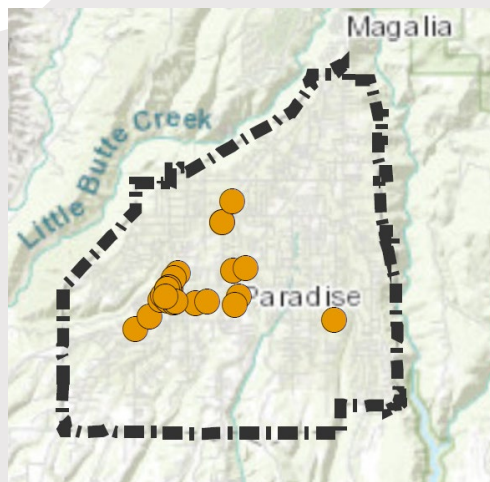
Replacement of damaged plastic culverts with reinforced concrete pipe culverts will decrease future possible damage to storm water infrastructure, improving safety along evacuation routes and effectively managing storm water runoff.

Where are the improvements located?

Culverts located on public roads that are part of the federal-aid system. Federal-aid roads do not include local roads or rural minor collectors.

When will this be constructed?

The current timeline allows for construction as early as 2022.



Project Description:

Replace damaged on-system hardscape at various locations. The project will remove and replace existing damaged concrete curb, gutter and sidewalk, lighting, planters and amenities at 30 locations town wide.

Key Result: Repair damaged hardscape along on-system roads to improve safety.

Timeframe: Pre-Construction: 20/21

Construction: 21/22

Funding:

Pre-Construction Cost: \$69,500

Construction Cost: \$798,290

Total Cost: \$867,790

Funding Resource: FHWA – Emergency Relief

Unmet Need Pre-Construction: \$7,972

Unmet Need Construction: \$91,564

ON-SYSTEM HARDSCAPE REPLACEMENT

Vision: Better
Project Number: 7302

CONTACT

Marc Mattox

Public Works Director/Town Engineer

mmmattox@townofparadise.com

530.872.6291 x105

Jessica Erdahl

Capital Projects Manager

jerdahl@townofparadise.com

530.872.6291 x103

WEBSITE:

www.townofparadise.com

www.makeitparadise.org

Frequently Asked Questions:

What does this mean for residents and businesses?

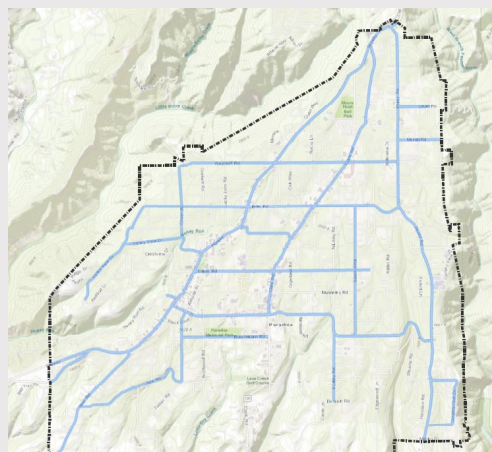
The Town's hardscape has sustained heavy damage in the wake of the Camp Fire. Repair of damaged concrete curb, gutter and sidewalk, lighting, planters and amenities at 30 locations town-wide will improve safety and pedestrian accessibility along on-system roads.

Where are the improvements located?

On-System roads are public roads that are part of the federal-aid system. Federal-aid roads do not include local roads or rural minor collectors.

When will this be constructed?

The current timeline allows for construction to start as early as 2022.



Project Description:

On-System roadway rehabilitation consisting of asphalt concrete overlays and full depth roadway section replacement for areas with severe pavement damage.

Key Result: Repair damaged roadways along evacuation routes to improve safety.

Timeframe: Pre-Construction: 20/21
Construction: 21/22-24/25

Funding:

Pre-Construction Cost: \$2,904,000

Construction Cost: \$33,386,000

Total Cost: \$36,290,000

Funding Resource: FHWA – Emergency Relief

Unmet Need Pre-Construction: \$718,740

Unmet Need Construction: \$8,263,035

ON-SYSTEM ROAD REHABILITATION

Vision: Safer

Project Number: 7303

CONTACT

Marc Mattox

Public Works Director/Town Engineer

mmmattox@townofparadise.com

530.872.6291 x105

Jessica Erdahl

Capital Projects Manager

jerdahl@townofparadise.com

530.872.6291 x103

WEBSITE:

www.townofparadise.com

www.makeitparadise.org

Frequently Asked Questions:

What does this mean for residents and businesses?

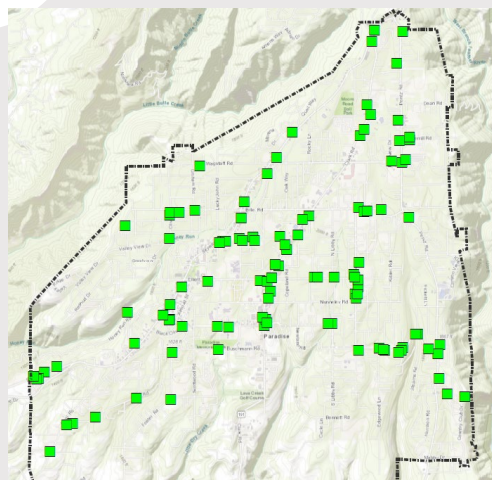
The Town's roadway infrastructure has sustained heavy damage in the wake of the Camp Fire. Repair of 32-miles of on-system roadways will improve safety along evacuation routes.

Where are the improvements located?

On-System roads are public roads that are part of the federal-aid system. Federal-aid roads do not include local roads or rural minor collectors.

When will this be constructed?

The current timeline allows for construction to start as early as 2022. Construction is anticipated to be phased over several construction years.



Project Description:

Replace damaged On-System roadway signs at various locations.

Key Result: Repair damaged roadway signs along evacuation routes to improve safety.

Timeframe: Pre-Construction: 20/21

Construction: 21/22

Funding:

Pre-Construction Cost: \$26,000

Construction Cost: \$298,180

Total Cost: \$324,180

Funding Resource: FHWA – Emergency Relief

Unmet Need Pre-Construction: \$2,982

Unmet Need Construction: \$34,201

ON-SYSTEM SIGN REPLACEMENT

Vision: Safer

Project Number: 7304

CONTACT

Marc Mattox

Public Works Director/Town Engineer

mmmattox@townofparadise.com

530.872.6291 x105

Jessica Erdahl

Capital Projects Manager

jerdahl@townofparadise.com

530.872.6291 x103

WEBSITE:

www.townofparadise.com

www.makeitparadise.org

Frequently Asked Questions:

What does this mean for residents and businesses?

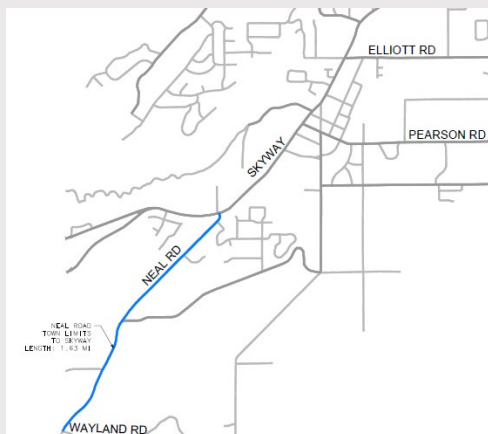
The Town's roadway signs have sustained heavy damage in the wake of the Camp Fire. Repair of 123 on-system roadway signs will improve safety along evacuation routes.

Where are the improvements located?

On-System roads are public roads that are part of the federal-aid system. Federal-aid roads do not include local roads or rural minor collectors.

When will this be constructed?

The current timeline allows for construction to start as early as 2022.



Project Description:

On-System roadway rehabilitation along 1.63 miles of Neal Road from Wayland Road to Skyway.

Key Result: Repair damaged roadway along a key evacuation route to improve safety.

Timeframe: Pre-Construction: 20/21

Construction: 22/23

Funding:

Pre-Construction Cost: \$143,000

Construction Cost: \$1,570,000

Total Cost: \$1,713,000

Funding Resource: FHWA – Emergency Relief

Unmet Need Pre-Construction: \$35,393

Unmet Need Construction: \$388,575

NEAL ROAD REHABILITATION

Vision: Safer

Project Number: 7307

CONTACT

Marc Mattox

Public Works Director/Town Engineer

mmmattox@townofparadise.com

530.872.6291 x105

Jessica Erdahl

Capital Projects Manager

jerdahl@townofparadise.com

530.872.6291 x103

WEBSITE:

www.townofparadise.com

www.makeitparadise.org

Frequently Asked Questions:

What does this mean for residents and businesses?

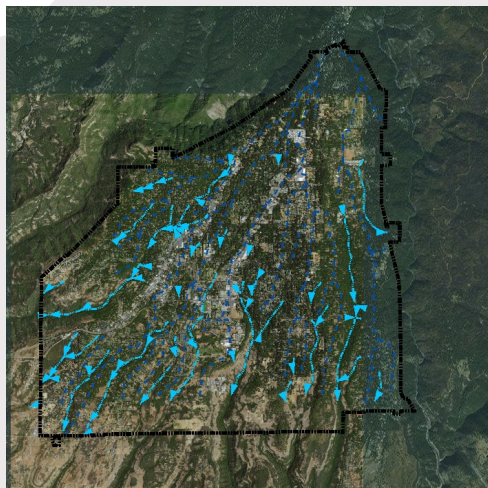
The Town's roadway infrastructure has sustained heavy damage in the wake of the Camp Fire. Repair of 1.63-miles of Neal Road, an on-system roadway and key evacuation route, will improve safety.

Where are the improvements located?

The entire length of Neal Road within the Town limits will receive a 3-inch overlay of asphalt concrete (AC). Areas with severe rutting and damage, will include additional rehabilitation treatments including roadway section digout repairs of 3-inches of AC and 4-inches of aggregate base.

When will this be constructed?

The current timeline allows for construction to start as early as 2022.



Project Description:

Develop a Storm Drain Master Plan to guide the development and implementation of new comprehensive drainage infrastructure improvements. The Town's Storm Drain MP has not been updated since its adoption in 1979.

Key Result: Develop a plan to provide safe and effective management of storm water runoff.

Timeframe: Pre-Construction: 20/21
Construction: 21/22-24/25

Funding:

Storm Drain Master Plan: \$419,429

Pre-Construction Cost: TBD

Construction Cost: TBD

Total Cost: TBD

Funding Resource: FEMA – Hazard Mitigation Grant

Unmet Need Storm Drain MP: \$104,855

Unmet Need Pre-Construction: \$TBD

Unmet Need Construction: TBD

STORM DRAIN MASTER PLAN

Vision: Greener
Project Number: 7308

CONTACT

Marc Mattox

Public Works Director/Town Engineer
mmmattox@townofparadise.com
530.872.6291 x105

Jessica Erdahl

Capital Projects Manager
jerdahl@townofparadise.com
530.872.6291 x103

WEBSITE:

www.townofparadise.com
www.makeitparadise.org

Frequently Asked Questions:

What does this mean for residents and businesses?

A current Storm Drain Master Plan would provide the Town with critical information to make storm water infrastructure improvements. Improvements would decrease the quantity of runoff, reduce flooding risk, and improve the quality of water.

Where is storm drain infrastructure located?

The Town of Paradise has 100-miles of storm water infrastructure throughout the Town.

When will this be constructed?

The current timeline allows for construction of identified projects to start as early as 2022. Funding for project development and construction has not been identified.



CATEGORY 4 TREE REMOVAL

Vision: Safer
Project Number: 7312

CONTACT

Katie Simmons
Disaster Recovery Director
ksimmons@townofparadise.com
530.872.6291 x153

Natasha Beehner
Grants Administrator
nbeehner@townofparadise.com
530.872.6291 x161

WEBSITE:
www.townofparadise.com
www.makeitparadise.org

Project Description:

Removal of the standing burnt trees within the Town of Paradise which were burned during the Camp Fire. This is the final phase of tree removal and represents the “back forty” on privately owned property.

Key Result:

Removal of hazardous trees within the Town of Paradise.

Timeframe:

Implementation: TBD

Funding:

Total Cost: \$11,747,128

Funding Resource: HMGP

Funding Status: Pending

Federal Funding: \$8,810,346

Unmet Need: \$2,936,782

Frequently Asked Questions:

What does this mean for residents and businesses?

Community members will have funding opportunities to remove the “back forty” trees that remain on their property and are hazardous to public safety.

When will this be available?

We are currently waiting for a response on a pending grant application.



CATEGORY 4 TREE REMOVAL ADD. ASSIST.

Vision: Safer
Project Number: 7312

CONTACT

Katie Simmons
Disaster Recovery Director
ksimmons@townofparadise.com
530.872.6291 x153

Natasha Beehner
Grants Administrator
nbeehner@townofparadise.com
530.872.6291 x161

WEBSITE:
www.townofparadise.com
www.makeitparadise.org

Project Description:

Removal of the standing burnt trees within the Town of Paradise which were burned during the Camp Fire. This is the final phase of tree removal and represents the “back forty” on privately owned property.

Key Result:

Removal of hazardous trees within the Town of Paradise.

Timeframe:

Implementation: TBD

Funding:

Total Cost: \$10,000,000

Funding Resource: HMGP

Funding Status: Pending

Federal Funding: \$7,500,000

Unmet Need: \$2,500,000

Frequently Asked Questions:

What does this mean for residents and businesses?

Community members will have funding opportunities to remove the “back forty” trees that remain on their property and are hazardous to public safety.

When will this be available?

We are submitting a grant application with HMGP by March 2021. Our Notice of Intent has been approved.



RESIDENTIAL IGNITION RESISTANT

Vision: Safer
Project Number: 7313

CONTACT

Katie Simmons
Disaster Recovery Director
ksimmons@townofparadise.com
530.872.6291 x153

Natasha Beehner
Grants Administrator
nbeehner@townofparadise.com
530.872.6291 x161

WEBSITE:
www.townofparadise.com
www.makeitparadise.org

Project Description:

Specific ignition resistant improvements would be eligible for the incentive Program if the mitigation measures meet or exceed the specifications set forth by the Town of Paradise, through the Town's Recovery Strategy and existing codes and standards, and compliant with the Wildfire Urban Interface Standards.

Key Result:

Residents will be able to implement mitigation measures for their home and landscape, with scope of work approved by FEMA and funding sources provided.

Timeframe:

Implementation: Estimated for 2021-2024

Funding:

Total Cost: \$8,465,986

Funding Resource: HMGP

Funding Status: Approved Grant for Advanced Planning

Federal Funding: \$6,349,490

Unmet Need: \$2,116,496

Frequently Asked Questions:

What does this mean for residents and businesses?

Knowledge on best practices to have a fire-safe community and home. Implementation opportunities for those mitigation projects with possible funding.

Where will the educational opportunities be located?

A plan will be established with Cal Fire partnership.

When will this be constructed?

The current grant application is pending.



EARLY WARNING SYSTEM

Vision: Safer
Project Number: 7314

CONTACT

Katie Simmons
Disaster Recovery Director
ksimmons@townofparadise.com
530.872.6291 x153

Natasha Beehner
Grant Administrator
nbeehner@townofparadise.com
530.872.6291 x161

WEBSITE:
www.townofparadise.com
www.makeitparadise.org

Project Description:

Development and implementation for an early warning system throughout the Town of Paradise. This system would immediately notify residents of any hazardous events via sirens, text messages, voice messages and more.

Key Result:

Safety for Residents with a timely notification, through many outlets.

Timeframe:

Planning: 2020
Construction: 2021/2023

Funding:

Total Cost: \$3,207,400
Funding Resource: HMGP

Plan & Process

Funding Status: Approved
Federal Funding: \$5,920
Unmet Need: \$1,480

Implementation

Funding Status: Pending
Federal Funding: \$2,560,000
Unmet Need: \$640,000

Frequently Asked Questions:

What does this mean for residents and businesses?

Rapid notification in the case of a wildfire or other hazard.
Communication in a time of emergency need.

When will this be completed?

The Town is awaiting a result of a pending grant application for construction.

Will I receive an alert automatically?

During the advanced planning process we will learn more about action items needed.



HAZARDOUS FUELS REDUCTION

Vision: Safer
Project Number: 7315

CONTACT

Katie Simmons
Disaster Recovery Director
ksimmons@townofparadise.com
530.872.6291 x153

Natasha Beehner
Grants Administrator
nbeehner@townofparadise.com
530.872.6291 x161

WEBSITE:
www.townofparadise.com
www.makeitparadise.org

Project Description:

Disposal of most vegetative debris at the Green Waste Yard adjacent to the Public Works yard on American Way in Paradise.

Key Result:

Mechanical and chemical reduction of hazardous fuels.

Timeframe:

Implementation: TBD

Funding:

Total Cost: \$1,625,872

Funding Resource: HMGP

Funding Status: Pending

Federal Funding: \$1,219,404

Unmet Need: \$406,468

Frequently Asked Questions:

What does this mean for residents and businesses?

Removal of hazardous fuel in the wake of the Camp Fire within Town.

When will this be completed?

The Town is awaiting a result of a pending grant application.



DEFENSIBLE SPACE CODE ENFORCEMENT

Vision: Safer
Project Number: 7316

CONTACT

Katie Simmons
Disaster Recovery Director
ksimmons@townofparadise.com
530.872.6291 x153

Natasha Beehner
Grants Administrator
nbeehner@townofparadise.com
530.872.6291 x161

WEBSITE:
www.townofparadise.com
www.makeitparadise.org

Project Description:

Assists in providing certainty to homeowners during the rebuilding process and beyond. Hardened building envelopes combined with aggressive fuel reduction would increase safety.

Key Result:

Updated residential codes and standards to improve fire resiliency.

Timeframe:

Implementation: TBD

Funding:

Total Cost: \$691,460

Funding Resource: HMGP

Funding Status: Pending

Federal Funding: \$518,595

Unmet Need: \$172,865

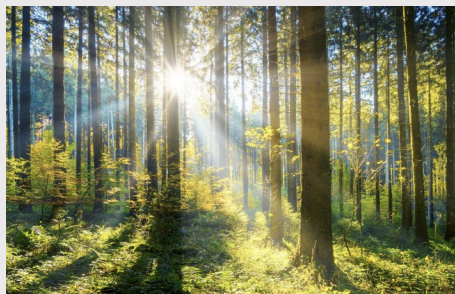
Frequently Asked Questions:

What does this mean for residents and businesses?

Additional assistance within the Town to build proper codes for public safety.

When will this be implemented?

The current timeline is estimated in 2021 as we are waiting for a decision on a pending grant application.



RESEEDING PROGRAM

Vision: Safer/Better
Project Number: 7317

CONTACT

Katie Simmons
Disaster Recovery Director
ksimmons@townofparadise.com
530.872.6291 x153

Natasha Beehner
Grants Administrator
nbeehner@townofparadise.com
530.872.6291 x161

WEBSITE:
www.townofparadise.com
www.makeitparadise.org

Project Description:

Plan and better understand the risk to public safety, property and infrastructure and determine appropriate mitigation measures to protect the public and reduce those risks. Will focus on the future planning and education of the community in best practices to reduce wildfire threat through reseeding after the Camp Fire.

Key Result:

Plan for reseeding the Town to reduce hazards and educate the community on vegetation.

Timeframe:

Pre-Construction: 2021

Construction: 22/24

Funding:

Total Cost: TBD

Funding Resource: HMGP

Plan & Process

Funding Status: Approved

Federal Funding: \$40,178

Unmet Need: \$13,393

Implementation

Funding Status: TBD

Federal Funding: TBD

Unmet Need: TBD

Frequently Asked Questions:

What does this mean for residents and businesses?

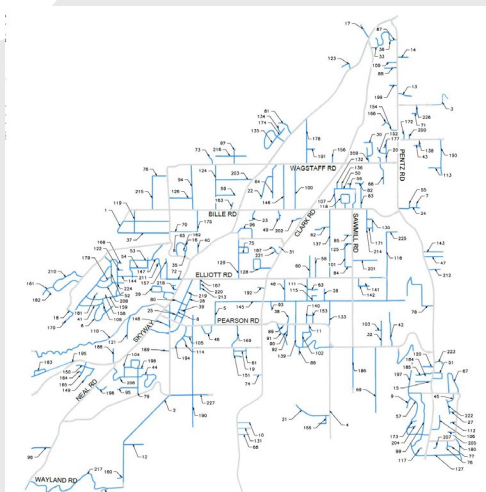
Education opportunities and reseeding the Town.

Will my property be reseeded?

We will provide you with educational opportunities to learn about the best vegetation for your property for wildfire mitigations.

When will this be constructed?

The Plan is being implemented in 2021 and this will create a better timeline for implementation.



Project Description:

Off-System roadway rehabilitation consisting of asphalt concrete overlays and full depth roadway section replacement for areas with severe pavement damage.

Key Result: Repair damaged roadways along evacuation routes to improve safety.

Timeframe: Pre-Construction: 20/21
Construction: 21/22-24/25

Funding:

Pre-Construction Cost: \$3,064,000

Construction Cost: \$35,226,000

Total Cost: \$38,290,000

Funding Resource: FEMA – Public Assistance

Unmet Need Pre-Construction: \$766,000

Unmet Need Construction: \$8,806,500

OFF-SYSTEM ROAD REHABILITATION

Vision: Safer
Project Number: 8407

CONTACT

Marc Mattox

Public Works Director/Town Engineer

mmmattox@townofparadise.com

530.872.6291 x105

Jessica Erdahl

Capital Projects Manager

jerdahl@townofparadise.com

530.872.6291 x103

WEBSITE:

www.townofparadise.com

www.makeitparadise.org

Frequently Asked Questions:

What does this mean for residents and businesses?

The Town's roadway infrastructure has sustained heavy damage in the wake of the Camp Fire. Repair of 47-miles of off-system roadways will improve safety along evacuation routes.

Where are the improvements located?

Off-System roads are public roads that are not part of the federal-aid system. These roads include local roads and rural minor collectors.

When will this be constructed?

The current timeline allows for construction to start as early as 2022. Construction is anticipated to be phased over several construction years.



OFF-SYSTEM CULVERT REPLACEMENT

Vision: Safer
Project Number: 8408

CONTACT

Marc Mattox

Public Works Director/Town Engineer
mmmattox@townofparadise.com
530.872.6291 x105

Jessica Erdahl

Capital Projects Manager
jerdahl@townofparadise.com
530.872.6291 x103

WEBSITE:

www.townofparadise.com
www.makeitparadise.org

Project Description:

Replace damaged Off-System HDPE culverts with RCP pipe culverts, including restoration of the roadway section above the pipe at various locations.

Key Result: Repair damaged culverts along evacuation routes to improve safety and provide safe and effective management of storm runoff.

Timeframe: Pre-Construction: 20/21
Construction: 21/22

Funding:

Pre-Construction Cost: \$53,000

Construction Cost: \$697,000

Total Cost: \$750,000

Funding Resource: FEMA – Public Assistance (Pending)

Unmet Need Pre-Construction: \$13,250

Unmet Need Construction: \$174,250

Frequently Asked Questions:

What does this mean for residents and businesses?

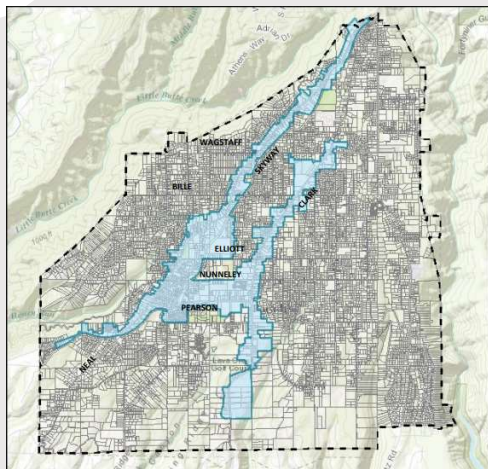
Replacement of damaged plastic culverts with reinforced concrete pipe culverts will decrease future possible damage to storm water infrastructure, improving safety along evacuation routes and effectively managing storm water runoff.

Where are the improvements located?

Culverts located on public roads that are not part of the federal-aid system. These roads include local roads and rural minor collectors.

When will this be constructed?

The current timeline allows for construction as early as 2022.



Project Description:

The Paradise Sewer Project will identify and implement a long-term solution for collection, treatment and disposal of wastewater generated in the proposed sewer service area.

Key Result: A sewer system installed in the urban core would incentive economic growth and reduce environmental impacts associated with septic systems.

Timeframe:

EIR: 20/21-21/22

Pre-Construction: 22/23-23/24

Construction: 24/25-25/26

Funding:

Pre-Construction Cost: \$32,326,000

Construction Cost: \$152,349,000

Total Cost: \$184,675,000

Funding Resource: State/USDA – Division of Financial Assistance (Partial)

Unmet Need Pre-Construction: \$29,926,000

Unmet Need Construction: 152,349,000

PARADISE SEWER PROJECT

Vision: Better
Project Number: 9394

CONTACT

Marc Mattox

Public Works Director/Town Engineer

mmmattox@townofparadise.com

530.872.6291 x105

Jessica Erdahl

Capital Projects Manager

jerdahl@townofparadise.com

530.872.6291 x103

WEBSITE:

www.townofparadise.com

www.makeitparadise.org

Frequently Asked Questions:

What does this mean for residents and businesses?

The SSA will serve most businesses in Paradise and provide for future development of more multi-family residences, which is currently limited due to septic system constraints.

Where will the sewer system infrastructure be located?

The sewer service area will be located in the urban core and serve 1,469 parcels.

When will this be constructed?

The project will be implemented in four phases: planning (complete); preliminary engineering and environmental clearance (06/22); final design, property acquisition, and environmental permitting (06/24) and, construction. The current timeline allows for construction to start as early as 2024. Construction is anticipated to be phased over several construction years.



TOWN OF PARADISE
1994 GENERAL PLAN

VOLUME I
POLICY DOCUMENT



AS AMENDED THROUGH JANUARY 2005
TOWN OF PARADISE COMMUNITY DEVELOPMENT DEPARTMENT
QUAD CONSULTANTS

Project Description:

Complete a comprehensive General Plan and Zoning Ordinance update. The Town's General Plan has not been updated since 1994.

Key Result: Comprehensive General Plan and Zoning Ordinance update to align with post-fire reconstruction.
Timeframe: 21/22

Funding:

General Plan Update: \$800,000
EIR: \$300,000
Zoning Code Update: \$100,000
Total Cost: \$1,200,000
Funding Resource: Unsecured
Unmet Need: \$1,200,000

Frequently Asked Questions:

What does this mean for residents and businesses?

Updating development goals and reaffirming land use patterns is central to recovery. A comprehensive General Plan update will be a community-driven process that allows for meaningful community engagement and aligns local priorities and needs to post-fire reconstruction.

GENERAL PLAN UPDATE

Vision: Better
Project Number: 9396

CONTACT

Susan Hartman
Community Development Director
shartman@townofparadise.com
530.872.6291 x114

WEBSITE:
www.townofparadise.com
www.makeitparadise.org



BROADBAND SERVICES

Vision: Stronger
Project Number: 9397

CONTACT

Katie Simmons
Disaster Recovery Director
ksimmons@townofparadise.com
530.872.6291 x153

Natasha Beehner
Grants Administrator
nbeehner@townofparadise.com
530.872.6291 x161

WEBSITE:
www.townofparadise.com
www.makeitparadise.org

Project Description:

Fiber optic network accessible to all residents and businesses as part of the infrastructure rebuilding effort.

Key Result:

Provide residents with an improved internet connection, allowing them to communicate more effectively, and it provides safer infrastructure for internet service distribution.

Timeframe:

Feasibility Plan: 2020/2021
Implementation: Estimated 2021/2025

Funding:

Total Cost: TBD
Funding Resource: TBD
Funding Status: Unsecured
Federal Funding: TBD
Unmet Need: TBD

Frequently Asked Questions:

What does this mean for residents and businesses?

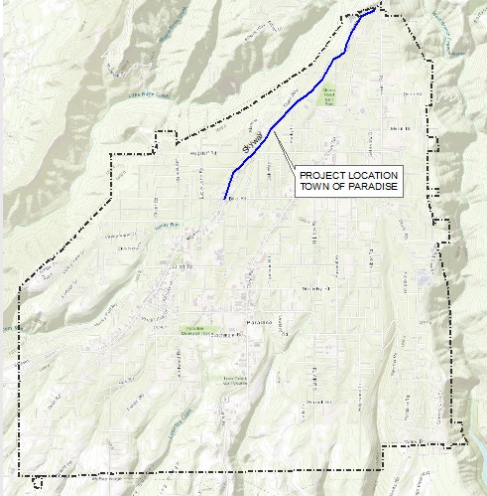
An improved internet connection to increase functionality for personal and professional purposes.

Where will Broadband Services be located?

This will be determined upon implementation, but the goal is throughout the Town of Paradise.

When will this be constructed?

The current timeline allows for construction as early as 2022.



UPPER SKYWAY WIDENING

Vision: Safer
Project Number: 9398

CONTACT

Marc Mattox
Public Works Director/Town Engineer
mmmattox@townofparadise.com
530.872.6291 x105

Jessica Erdahl
Capital Projects Manager
jerdahl@townofparadise.com
530.872.6291 x103

WEBSITE:
www.townofparadise.com
www.makeitparadise.org

Project Description:

Widening Upper Skyway from Billie Road to Pentz Road, to include a center turn lane, widened shoulders and a multi-use pathway.

Key Result: Widen roadway along main evacuation route to improve safety and evacuation options.

Timeframe: Pre-Construction: TBD
Construction: TBD

Funding:

Pre-Construction Cost: \$5,394,600

Construction Cost: \$14,580,000

Total Cost: \$19,974,600

Funding Resource: Unsecured

Unmet Need Pre-Construction: \$5,394,600

Unmet Need Construction: \$14,580,000

Frequently Asked Questions:

What does this mean for residents and businesses?

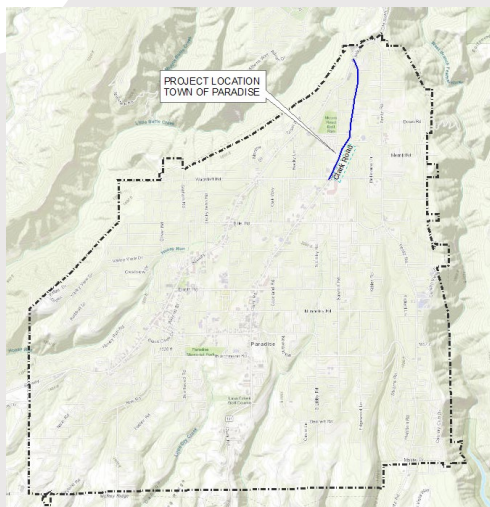
The Skyway serves as the primary ingress/egress route for Town residents. Widening the road will improve evacuation along this route, provide an adequate shoulder to park disabled vehicles and reduce fire fuel proximity to the traveling public. Consistent with the Long-Term Recovery Plan, the project includes a grade separated multi-use bike and pedestrian pathway. This pathway can function as emergency ingress/egress during future evacuation events. Increased evacuation capacity also improves public safety and compatibility for affordable multi-family housing for the region.

Where are the improvements located?

The improvements are located between Billie Road and Pentz Road along the Skyway (2.7 miles) and would include the addition of a 12-ft wide center turn lane, increased shoulder widths and a multi-use pathway.

When will this be constructed?

The Town is in the process of developing a comprehensive Transportation Master Plan that would provide critical information to improve main evacuation routes. The Upper Skyway Widening project is an anticipated project that will be identified in the plan for implementation.



Project Description:

Widening Clark Road from Wagstaff Road to Skyway, to include a center turn lane, widened shoulders and a multi-use pathway.

Key Result: Widen roadway along main evacuation route to improve safety and evacuation options.

Timeframe: Pre-Construction: TBD

Construction: TBD

Funding:

Pre-Construction Cost: \$2,997,000

Construction Cost: \$8,100,000

Total Cost: \$11,097,000

Funding Resource: Unsecured

Unmet Need Pre-Construction: \$2,997,000

Unmet Need Construction: \$8,100,000

UPPER CLARK ROAD WIDENING

Vision: Safer

Project Number: 9399

CONTACT

Marc Mattox

Public Works Director/Town Engineer

mmmattox@townofparadise.com

530.872.6291 x105

Jessica Erdahl

Capital Projects Manager

jerdahl@townofparadise.com

530.872.6291 x103

WEBSITE:

www.townofparadise.com

www.makeitparadise.org

Frequently Asked Questions:

What does this mean for residents and businesses?

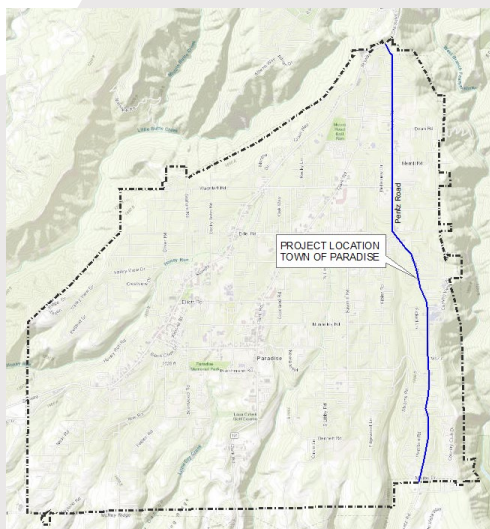
Clark Road serves as a primary ingress/egress route for Town residents. Widening the road will improve evacuation along this route, provide an adequate shoulder to park disabled vehicles and reduce fire fuel proximity to the traveling public. Consistent with the Long-Term Recovery Plan, the project includes a grade separated multi-use bike and pedestrian pathway. This pathway can function as emergency ingress/egress during future evacuation events. Increased evacuation capacity also improves public safety and compatibility for affordable multi-family housing for the region.

Where are the improvements located?

The improvements are located between Wagstaff Road and the Skyway along Clark Road (1.5 miles) and would include the addition of a 12-ft wide center turn lane, increased shoulder widths and a multi-use pathway.

When will this be constructed?

The Town is in the process of developing a comprehensive Transportation Master Plan that would provide critical information to improve main evacuation routes. The Clark Road Widening project is an anticipated project that will be identified in the plan for implementation.



Project Description:

Widening Pentz Road from the Skyway to Town limits, to include a center turn lane, widened shoulders and a multi-use pathway.

Key Result: Widen roadway along main evacuation route to improve safety and evacuation options.

Timeframe: Pre-Construction: TBD
Construction: TBD

Funding:

Pre-Construction Cost: \$6,750,000

Construction Cost: \$27,000,000

Total Cost: \$36,990,000

Funding Resource: Unsecured

Unmet Need Pre-Construction: \$6,750,000

Unmet Need Construction: \$27,000,000

PENTZ ROAD WIDENING

Vision: Safer
Project Number: 9400

CONTACT

Marc Mattox

Public Works Director/Town Engineer
mmmattox@townofparadise.com
530.872.6291 x105

Jessica Erdahl

Capital Projects Manager
jerdahl@townofparadise.com
530.872.6291 x103

WEBSITE:

www.townofparadise.com
www.makeitparadise.org

Frequently Asked Questions:

What does this mean for residents and businesses?

Pentz Road serves as a primary ingress/egress route for Town residents. Widening the road will improve evacuation along this route, provide an adequate shoulder to park disabled vehicles and reduce fire fuel proximity to the traveling public. Consistent with the Long-Term Recovery Plan, the project includes a grade separated multi-use bike and pedestrian pathway. This pathway can function as emergency ingress/egress during future evacuation events. Increased evacuation capacity also improves public safety and compatibility for affordable multi-family housing for the region.

Where are the improvements located?

The improvements are located between the Skyway and Town limits along Pentz Road (5 miles) and would include the addition of a 12-ft wide center turn lane, increased shoulder widths and a multi-use pathway.

When will this be constructed?

The Town is in the process of developing a comprehensive Transportation Master Plan that would provide critical information to improve main evacuation routes. The Clark Road Widening project is an anticipated project that will be identified in the plan for implementation.



Project Description:

Widening Neal Road from the Skyway to Town limits, to include a center turn lane, widened shoulders and a multi-use pathway.

Key Result: Widen roadway along main evacuation route to improve safety and evacuation options.

Timeframe: Pre-Construction: TBD

Construction: TBD

Funding:

Pre-Construction Cost: \$3,196,800

Construction Cost: \$8,640,000

Total Cost: \$11,836,800

Funding Resource: Unsecured

Unmet Need Pre-Construction: \$3,196,800

Unmet Need Construction: \$8,640,000

Frequently Asked Questions:

What does this mean for residents and businesses?

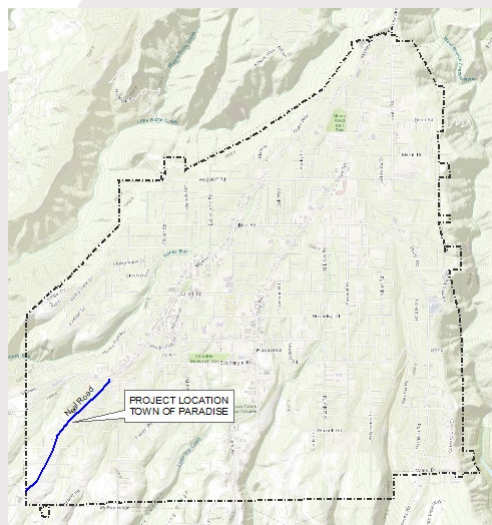
Neal Road serves as a primary ingress/egress route for Town residents. Widening the road will improve evacuation along this route, provide an adequate shoulder to park disabled vehicles and reduce fire fuel proximity to the traveling public. Consistent with the Long-Term Recovery Plan, the project includes a grade separated multi-use bike and pedestrian pathway. This pathway can function as emergency ingress/egress during future evacuation events. Increased evacuation capacity also improves public safety and compatibility for affordable multi-family housing for the region.

Where are the improvements located?

The improvements are located between the Skyway and Town limits along Neal Road (1.6 miles) and would include the addition of a 12-ft wide center turn lane, increased shoulder widths and a multi-use pathway.

When will this be constructed?

The Town is in the process of developing a comprehensive Transportation Master Plan that would provide critical information to improve main evacuation routes. The Neal Road Widening project is an anticipated project that will be identified in the plan for implementation.



NEAL ROAD WIDENING

Vision: Safer

Project Number: 9401

CONTACT

Marc Mattox

Public Works Director/Town Engineer

mmmattox@townofparadise.com

530.872.6291 x105

Jessica Erdahl

Capital Projects Manager

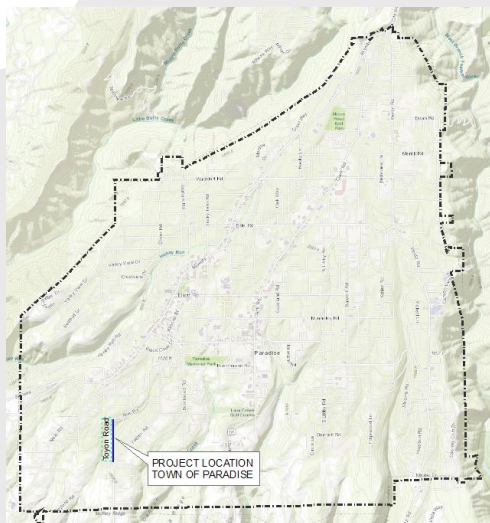
jerdahl@townofparadise.com

530.872.6291 x103

WEBSITE:

www.townofparadise.com

www.makeitparadise.org



Project Description:

Includes the acquisition of a current privately-owned roadway which requires reconstruction. This private roadway offers improved circulation benefits for emergency preparedness, response and evacuation.

Key Result: Repair damaged roadways along evacuation routes to improve safety.

Timeframe: Pre-Construction: TBD
Construction: TBD

Funding:

Pre-Construction Cost: \$270,000

Construction Cost: \$1,000,000

Total Cost: \$1,270,000

Funding Resource: Unsecured

Unmet Need Pre-Construction: \$270,000

Unmet Need Construction: \$1,000,000

TOYON LANE IMPROVEMENTS

Vision: Safer

Project Number: 9402

CONTACT

Marc Mattox

Public Works Director/Town Engineer

mmmattox@townofparadise.com

530.872.6291 x105

Jessica Erdahl

Capital Projects Manager

jerdahl@townofparadise.com

530.872.6291 x103

WEBSITE:

www.townofparadise.com

www.makeitparadise.org

Frequently Asked Questions:

What does this mean for residents and businesses?

Toyon Lane is a current private road which offers circulation benefits for access between Roe Road and Foster Road.

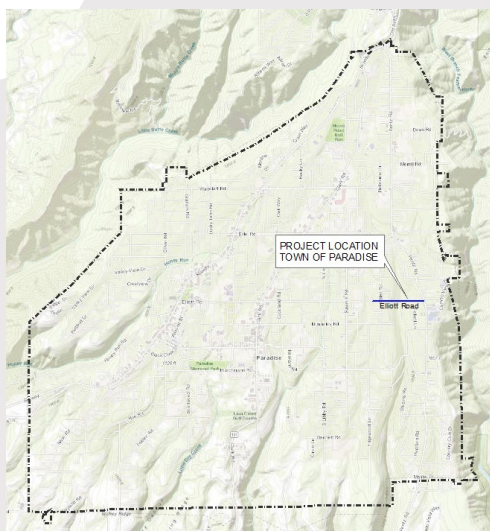
Increased evacuation capacity also improves public safety and compatibility for affordable multi-family housing for the region.

Where are the improvements located?

The improvements are located between the Roe Road and Foster Road (0.50 miles).

When will this be constructed?

The Town is in the process of developing a comprehensive Transportation Master Plan that would provide critical information to improve main evacuation routes. The Toyon Lane Improvements project is an anticipated project that will identified in the plan for implementation.



Project Description:

The Elliott Road Extension Project would establish a cross-town connection between Sawmill Road and Pentz road. Pentz Road is a primary evacuation route.

Key Result: Improve circulation and evacuation options.

Timeframe: Pre-Construction: TBD

Construction: TBD

Funding:

Pre-Construction Cost: \$1,864,800

Construction Cost: \$5,040,000

Total Cost: \$6,904,800

Funding Resource: Unsecured

Unmet Need Pre-Construction: \$1,864,800

Unmet Need Construction: \$5,040,000

ELLIOTT ROAD EXTENSION

Vision: Safer

Project Number: 9403

CONTACT

Marc Mattox

Public Works Director/Town Engineer

mmmattox@townofparadise.com

530.872.6291 x105

Jessica Erdahl

Capital Projects Manager

jerdahl@townofparadise.com

530.872.6291 x103

WEBSITE:

www.townofparadise.com

www.makeitparadise.org

Frequently Asked Questions:

What does this mean for residents and businesses?

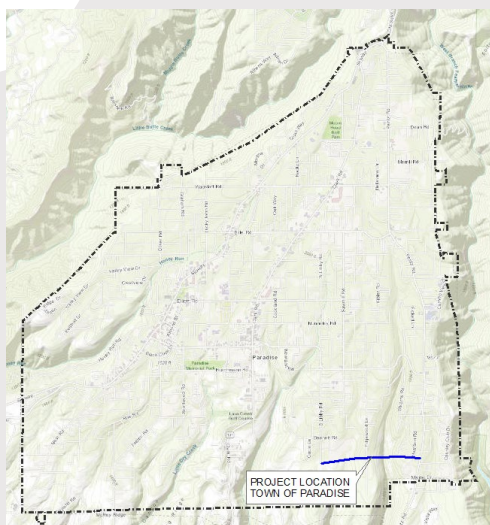
Elliott Road serves as primary east/west route for Town residents. Building this missing road segment between Sawmill and Pentz Road is essential to improving circulation and evacuation routes.

Where are the improvements located?

The improvements are located between the Sawmill Road and Pentz Road (0.70 miles).

When will this be constructed?

The Town is in the process of developing a comprehensive Transportation Master Plan that would provide critical information to improve main evacuation routes. The Elliott Road Extension project is an anticipated project that will be identified in the plan for implementation.



Project Description:

The Roe Road Extension Project would establish a cross-town connection between Roe Road and Pentz Road. Phase 1 proposes to create a roadway connection between S. Libby Road and Pentz Road. Pentz Road is a primary evacuation route.

Key Result: Improve circulation and evacuation options.

Timeframe: Pre-Construction: TBD

Construction: TBD

Funding:

Pre-Construction Cost: \$2,430,000

Construction Cost: \$9,000,000

Total Cost: \$11,430,000

Funding Resource: Unsecured

Unmet Need Pre-Construction: \$2,430,000

Unmet Need Construction: \$9,000,000

ROE ROAD EXTENSION PHASE 1

Vision: Safer

Project Number: 9405

CONTACT

Marc Mattox

Public Works Director/Town Engineer

mmmattox@townofparadise.com

530.872.6291 x105

Jessica Erdahl

Capital Projects Manager

jerdahl@townofparadise.com

530.872.6291 x103

WEBSITE:

www.townofparadise.com

www.makeitparadise.org

Frequently Asked Questions:

What does this mean for residents and businesses?

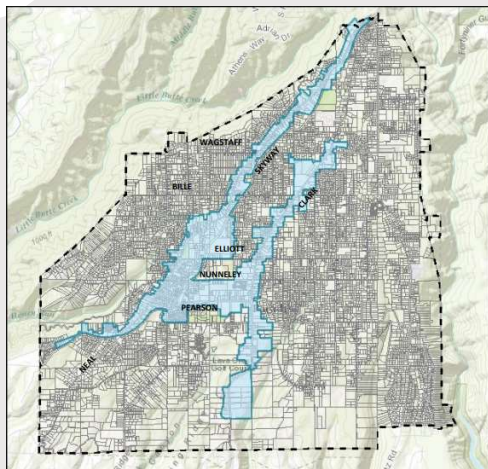
Building this missing road segment between S Libby Road and Pentz Road will create connectivity between dead end streets (S Libby Road and Edgewood Lane), and is essential to improving circulation and evacuation routes.

Where are the improvements located?

The improvements are located between the S Libby Road and Pentz Road near the Town limits (1.25 miles).

When will this be constructed?

The Town is in the process of developing a comprehensive Transportation Master Plan that would provide critical information to improve main evacuation routes. The Roe Road Extension Project Phase 1 is an anticipated project that will identified in the plan for implementation.



SEWER SERVICE AREA SPECIFIC PLAN

Vision: Better
Project Number: 9406

CONTACT

Marc Mattox
Public Works Director/Town Engineer
mmmattox@townofparadise.com
530.872.6291 x105

Jessica Erdahl
Capital Projects Manager
jerdahl@townofparadise.com
530.872.6291 x103

WEBSITE:
www.townofparadise.com
www.makeitparadise.org

Project Description:

The Sewer Service Area Specific Plan will establish updated zoning and land use designations and shall include the statutory requirements per Section 65451 of the Government Code.

Key Result: Specific Plan and Zoning Ordinance update to align with post-fire reconstruction in the sewer service area.

Timeframe: 21/22

Funding:

Pre-Construction Cost: \$800,000

Total Cost: \$800,000

Funding Resource: Unsecured

Unmet Need: \$800,000

Frequently Asked Questions:

What does this mean for residents and businesses?

Developing goals and reaffirming land use patterns in the Sewer Service Area is central to recovery. The Plan will address the distribution, location and designation of land uses, including open space as well as major components of all public and private infrastructure, and will also include development regulations and standards, implementation measures and financing.



PARADISE TRANSIT CENTER

Vision: Better
Project Number: 9407

CONTACT

Marc Mattox
Public Works Director/Town Engineer
mmmattox@townofparadise.com
530.872.6291 x105

Andy Newsom
Butte County Association of Governments
B-Line Transit
ANewsom@bcag.org
530.809.4616

WEBSITE:
www.townofparadise.com
www.makeitparadise.org

Project Description:

The Paradise Transit Center will link the community at large and multi-family housing in the downtown core to a safe and equitable facility which provides transportation to the Upper Ridge, City of Chico and City of Oroville.

Key Result: Enable increased access to affordable public transit to key destinations

Timeframe: 21/22

Funding:

Pre-Construction Cost: \$400,000

Construction Cost: \$2,000,000

Total Cost: \$2,400,000

Funding Resource: Congestion Mitigation & Air Quality

Unmet Need: \$2,000,000

Frequently Asked Questions:

What does this mean for residents and businesses?

With the Paradise Transit Center constructed, residents will have easier access to public transit which can reach both the City of Chico and City of Oroville.

Where are the improvements located?

Located at the intersection of Black Olive Drive and Birch Street, the Paradise Transit Center is centered in the heart of Downtown Paradise adjacent to future multi-family housing and community resources.

When will this be constructed?

The Paradise Transit Center has completed all design and environmental reviews. Once construction funding is allocated, this shovel-ready project could be built in less than twelve months from authorization to proceed.