



**Town of Paradise**  
Community Development Department  
6295 Skyway  
Paradise, CA 95969  
(530) 872-6291 ext 411

## Wastewater Stakeholders Meeting



May 20, 2026

### Important Links and Resources

This presentation will be available at

<https://www.townofparadise.com/septic/page/wastewater-stakeholder-meeting>

GovWell applications and public dashboards <https://app.govwell.com/paradise>

 <b>Public Dashboards</b> Search for Building Permits, Business Licenses, and Wastewater Permit	 <b>Wastewater Permit</b> Apply for a Wastewater Permit with the Town of Paradise.
---	--

Town of Paradise Municipal Codes:

[https://library.municode.com/ca/paradise/codes/code\\_of\\_ordinances?nodeId=TIT13P\\_USE\\_CH13.04SEDI](https://library.municode.com/ca/paradise/codes/code_of_ordinances?nodeId=TIT13P_USE_CH13.04SEDI)

Onsite Wastewater Manual:

[https://www.townofparadise.com/sites/default/files/fileattachments/septic\\_/onsite/page/38581/onsite\\_manual\\_051016.pdf](https://www.townofparadise.com/sites/default/files/fileattachments/septic_/onsite/page/38581/onsite_manual_051016.pdf)

Site Plan Requirements:

[https://www.townofparadise.com/sites/default/files/fileattachments/septic\\_/onsite/page/38581/plot\\_plan\\_requirements.pdf](https://www.townofparadise.com/sites/default/files/fileattachments/septic_/onsite/page/38581/plot_plan_requirements.pdf)

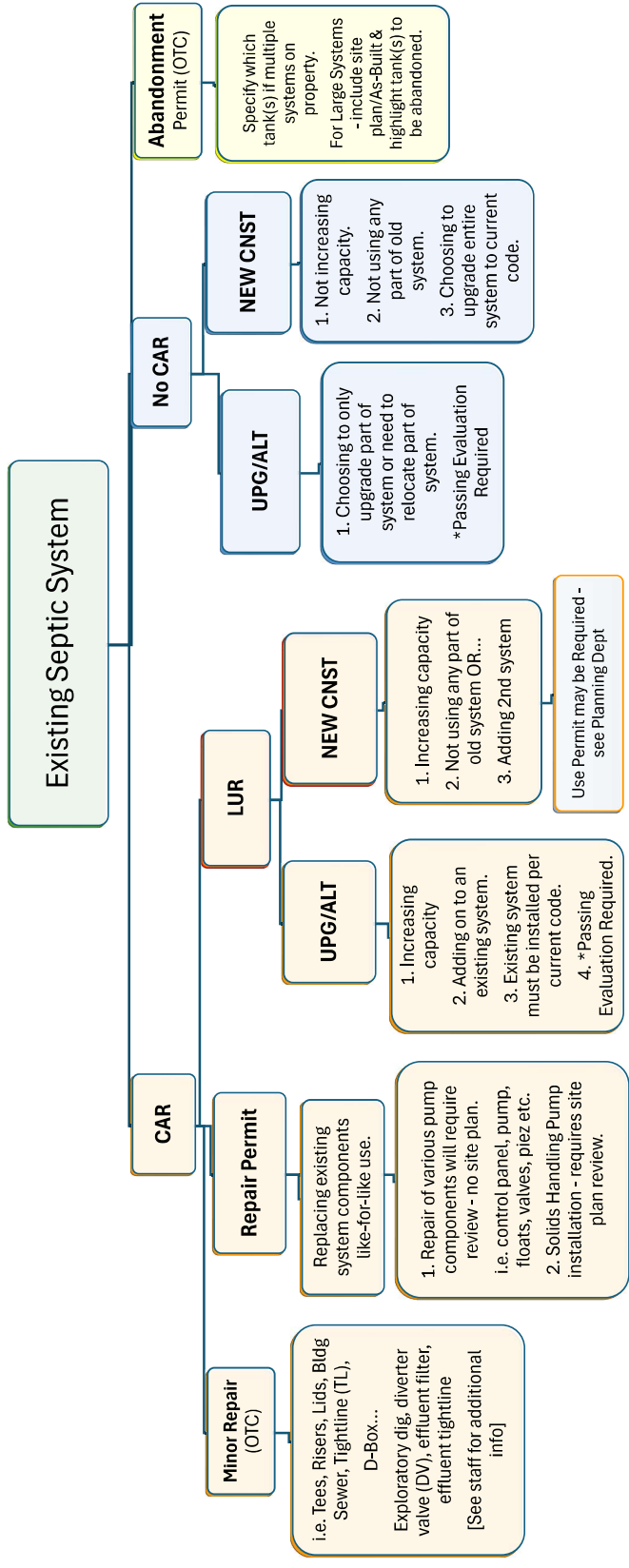
Fillable trench detail (example enclosed):

[https://www.townofparadise.com/sites/default/files/fileattachments/septic\\_/onsite/page/38581/leach\\_line\\_sectional\\_view\\_fillable.pdf](https://www.townofparadise.com/sites/default/files/fileattachments/septic_/onsite/page/38581/leach_line_sectional_view_fillable.pdf)

Soils, zoning, and As Built documents coming July 2026

<https://townofparadisemapping.com/>

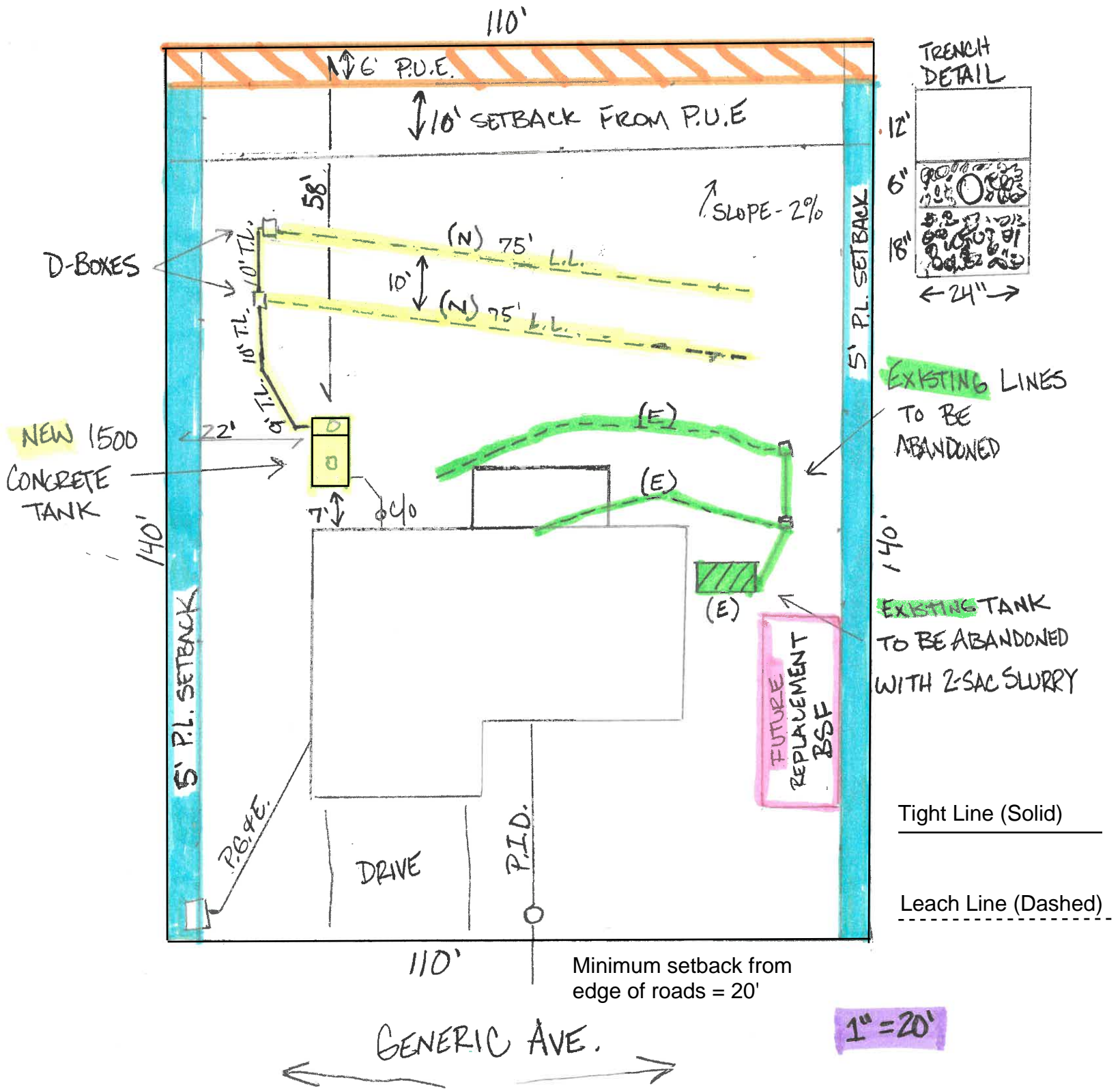
Contact us: [wastewater@townofparadise.com](mailto:wastewater@townofparadise.com)



\*Passing Evaluation Required - for septic components remaining in use.  
 OTC - Over the Counter LUR - Land Use Review

# 123 GENERIC AVE.

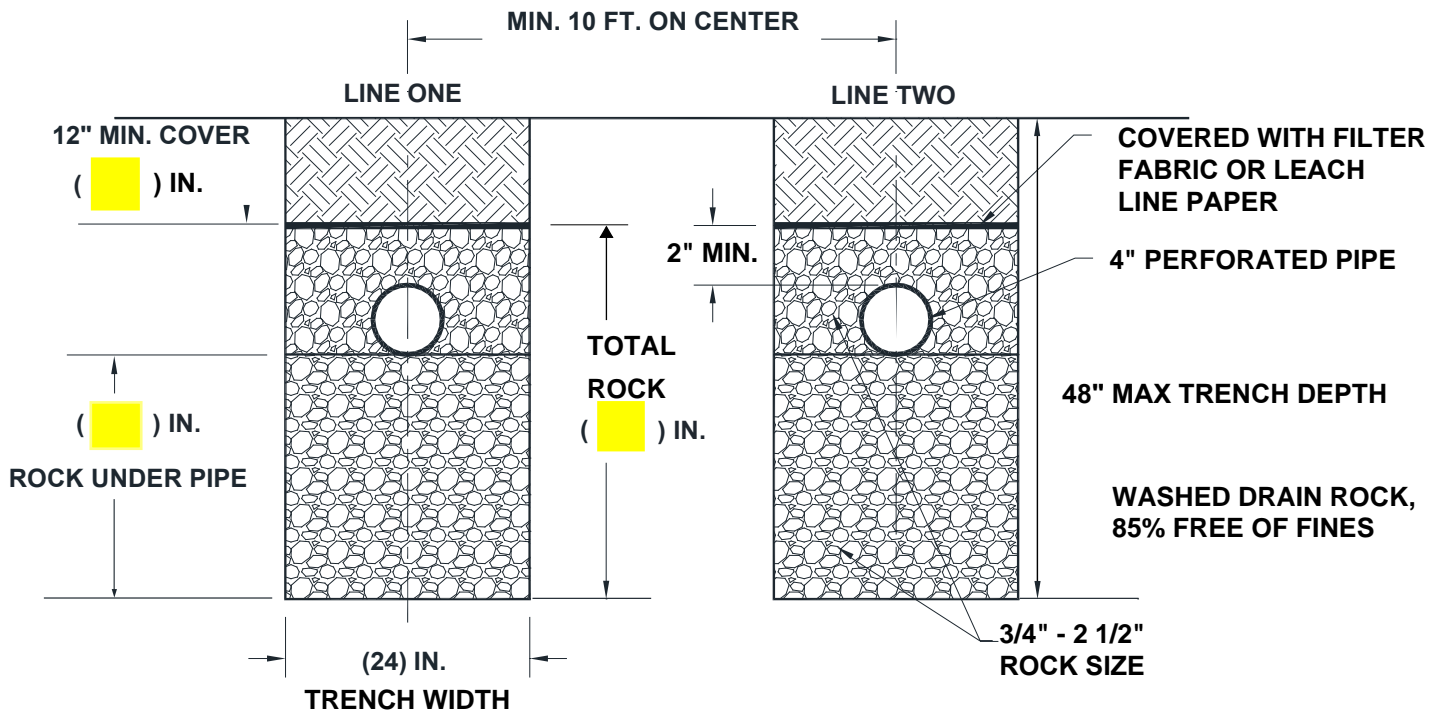
PROPOSED 3 BDRM SYSTEM APN: 123-456-789-000  
(N) 1500 GALLON CONCRETE TANK  
(N) 150' TRIPLE ROCK LEACH FIELD





## LEACH LINE SECTIONAL VIEW

See LAMP Chapter 4



NOT TO SCALE