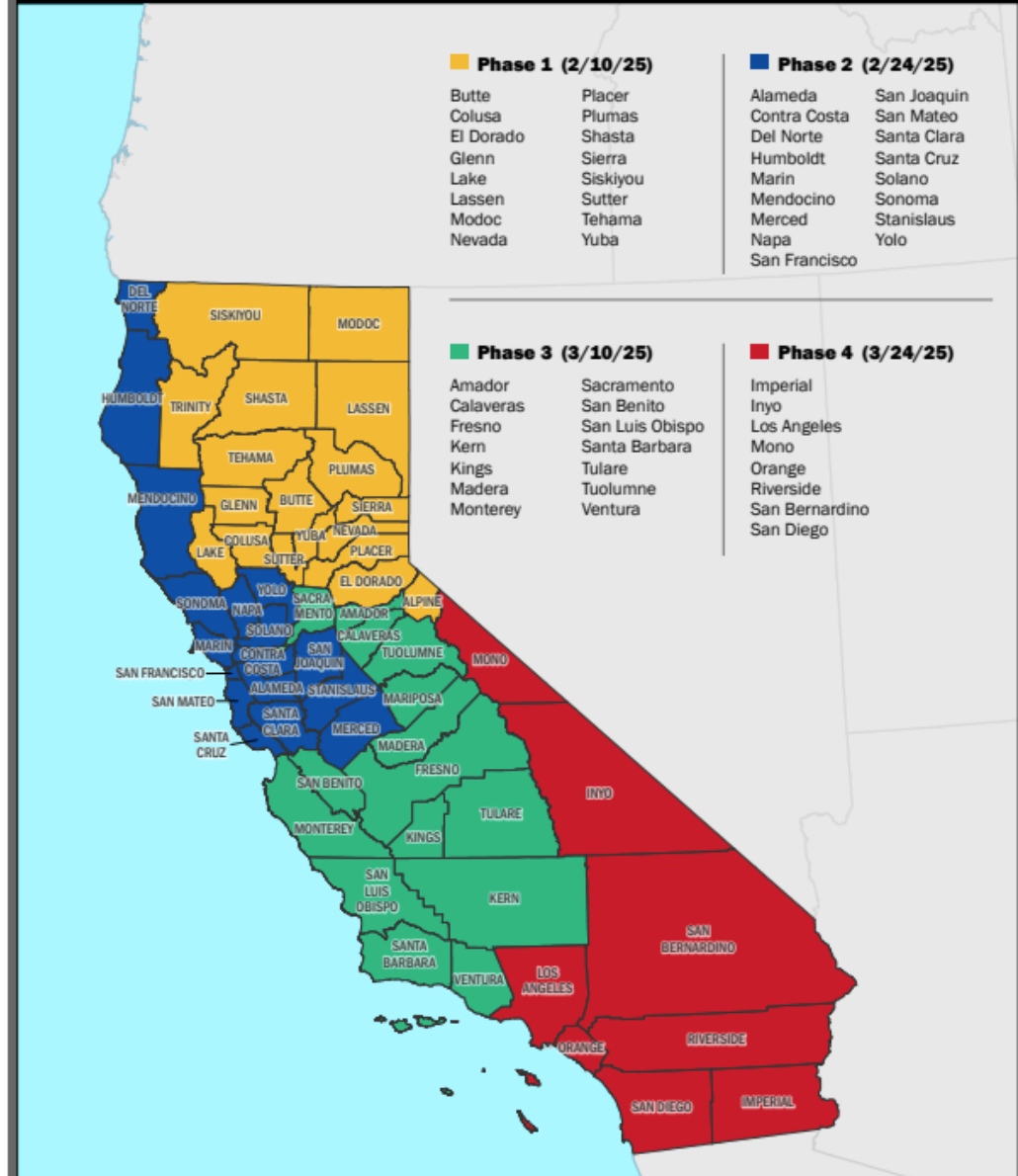


# Updated Local Responsibility Area (LRA) Fire Hazard Severity Zone Mapping

Town Council Presentation  
April 8, 2025

## LRA FHSZ Rollout Plan

OFFICE OF THE  
STATE FIRE MARSHAL



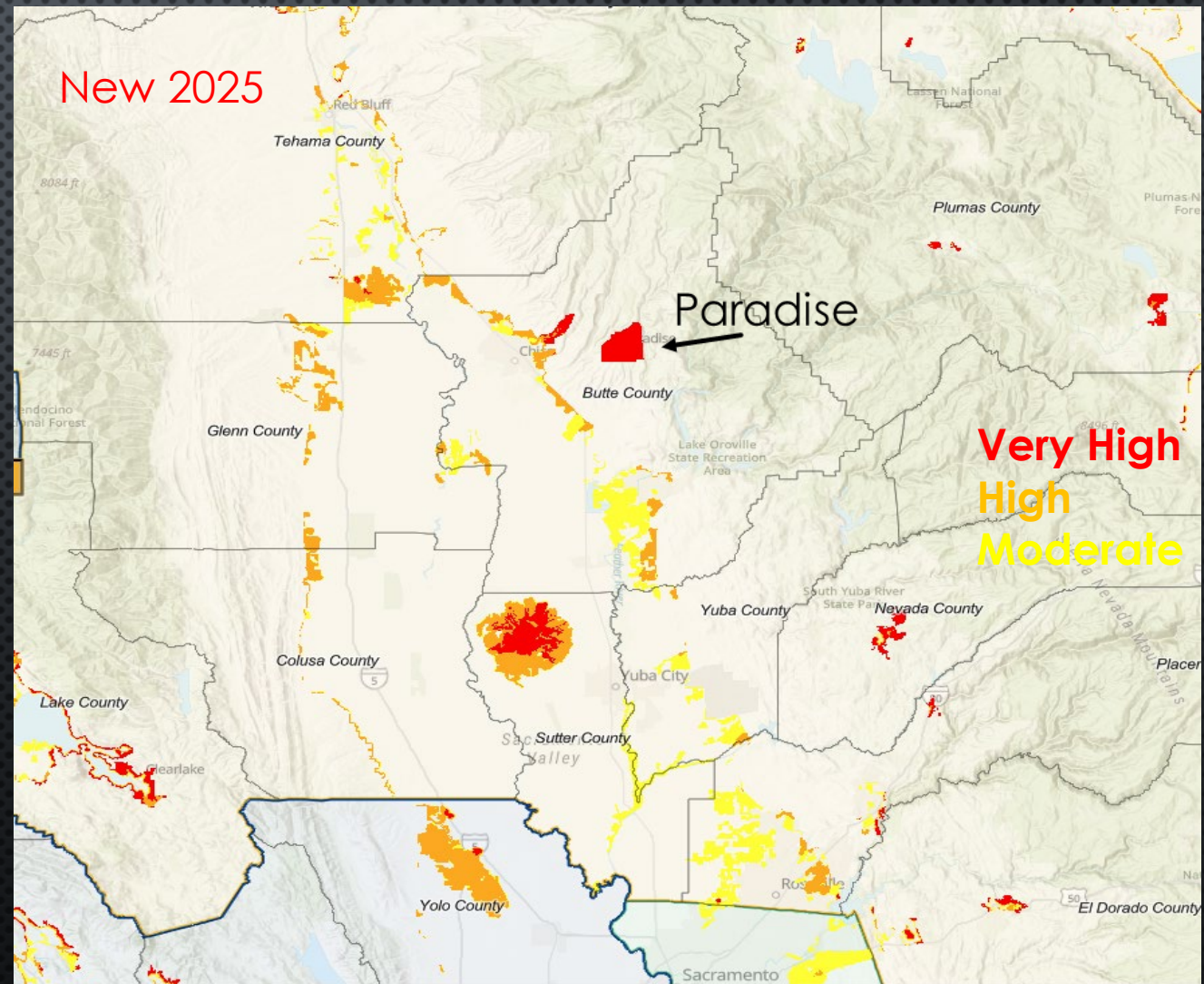
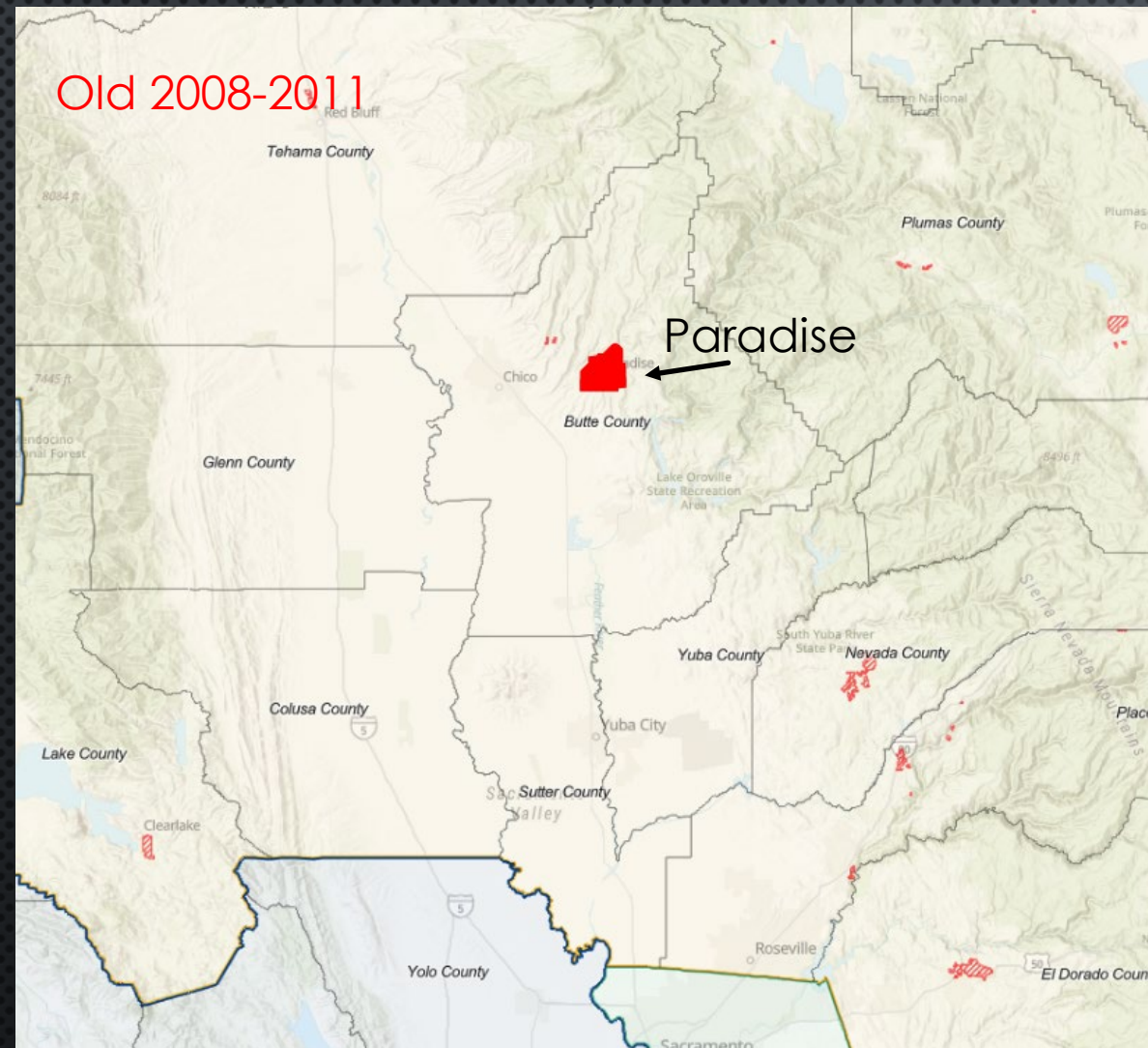
The State of California and the Department of Forestry and Fire Protection make no representations or warranties regarding the accuracy of data or maps. Neither the State nor the Department shall be liable under any circumstances for any direct, special, incidental, or consequential damages with respect to any claim by any user or third party on account of, or arising from, the use of data or maps.  
Data Sources: FRAP (only19\_3)  
Office of the State Fire Marshal, 2/5/2025



- In 2008, the State Fire Marshal began mapping Fire Hazard Severity Zones in Local Responsibility Areas (LRA), identifying the Town as a Very High Fire Hazard Severity Zone (VHFHSZ).
- The Town adopted the 2008 map in 2010 and reaffirmed it in PMC Title 15 with each subsequent Building Code adoption in 2013, 2016, 2019, and 2022.
- The fire hazard mapping is directly linked to building code requirements for properties located in any Fire Hazard Severity Zone.
- In 2025, the State Fire Marshal released an updated map, which continues to designate the Town as a VHFHSZ and sets a statutory adoption timeline.

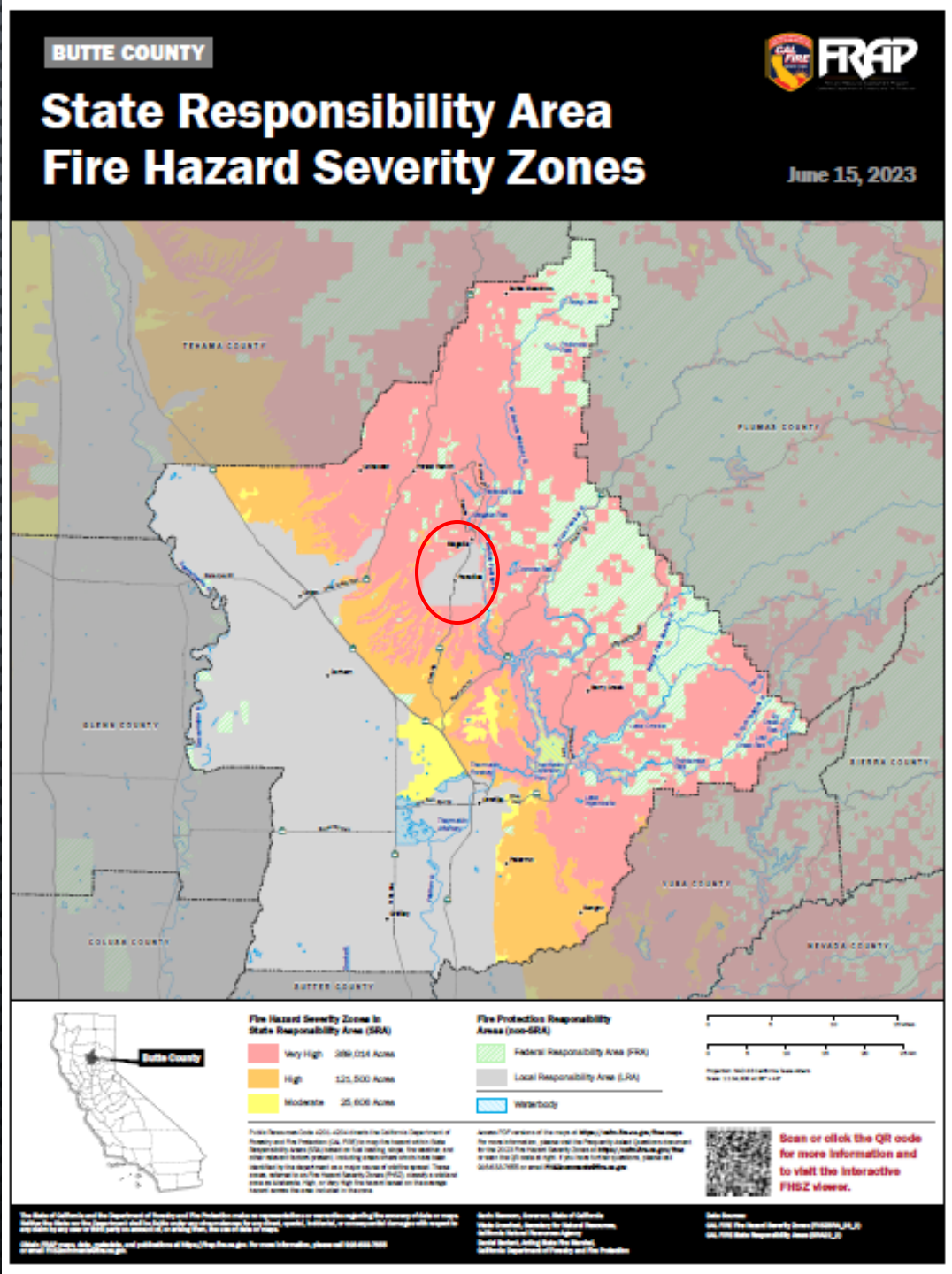


# Old (2008-2011) vs. New (2025) recommended FHSZ in the LRA





# Updated State Responsibility Area (SRA) Map for Butte County Released June 2023





# ADOPTION TIMELINE

Once the LRA maps are released, towns, cities, and counties must meet the following statutory requirements:

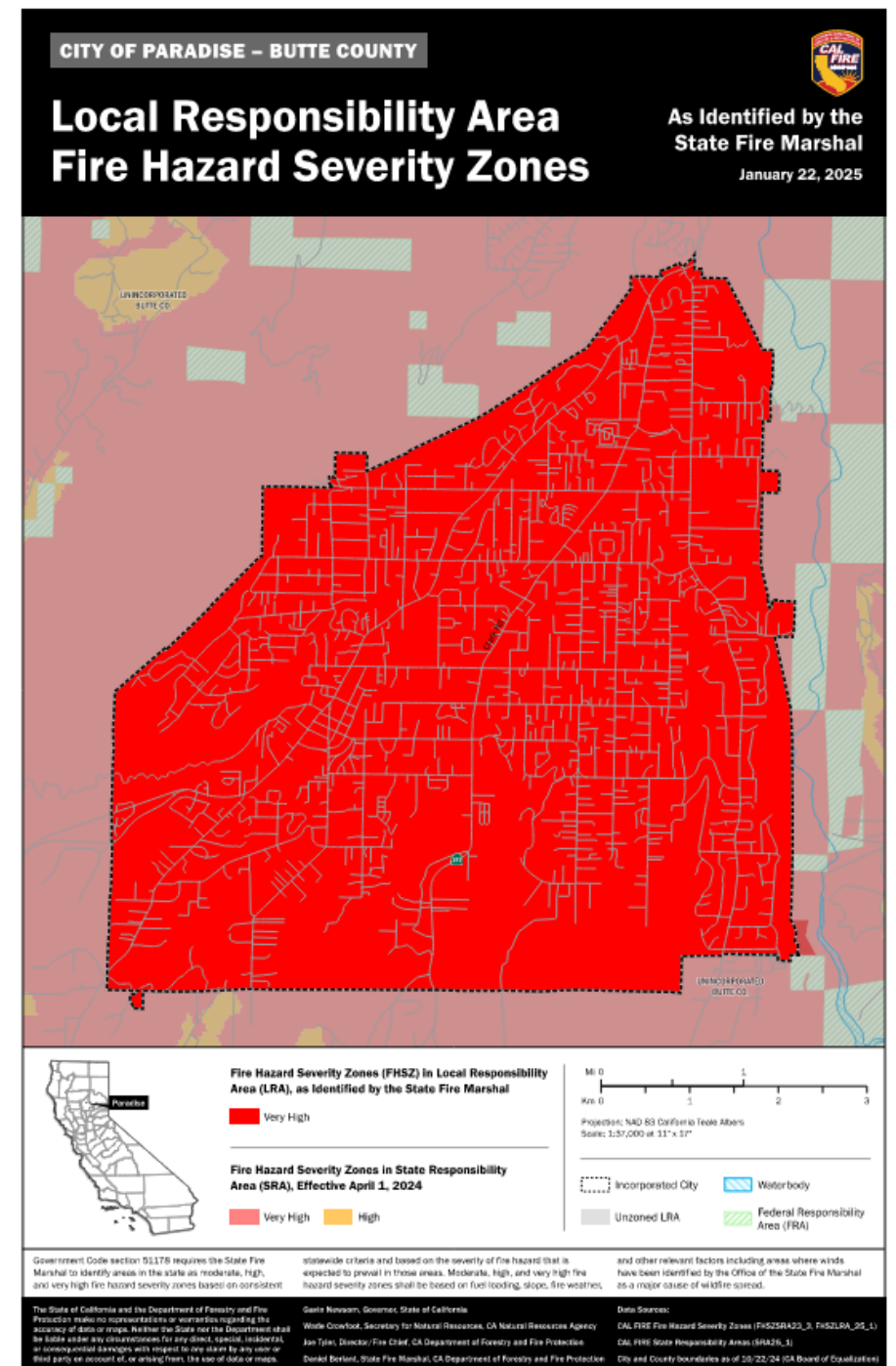
1. The local jurisdiction must make the map available for public review and comment within 30 days of its release on February 10, 2025. (Feb 23<sup>rd</sup> – March 24<sup>th</sup>)
2. Local jurisdictions must adopt the map via local ordinance within 120 days of the map release. (2<sup>nd</sup> reading by June 10<sup>th</sup>)
3. Within 30 days from the local ordinance adoption, local jurisdictions must transmit the ordinance back to the state. (July 10<sup>th</sup> deadline)



The State Fire Marshal Fire Hazard Severity Zone map evaluates Hazard.

“Hazard” is based on the physical conditions that create a likelihood and expected fire behavior over a 50-year period based on:

- Fire history
- Terrain
- Local weather
- Vegetation cover
- Fuel loading
- Blowing embers
- Proximity to wildland





# COUNCIL ACTION REQUESTED

1. Consider waiving the first reading of Town Ordinance No. \_\_\_\_\_ and read by title only (roll call vote); **AND**
2. Introduce Town Ordinance No. \_\_\_\_\_. “An Ordinance of the Town Council of the Town of Paradise adopting the updated CAL FIRE 2025 Local Responsibility Area Fire Hazard Severity Zone Map for the Town of Paradise” **OR**
3. Provide alternative direction to Town staff.